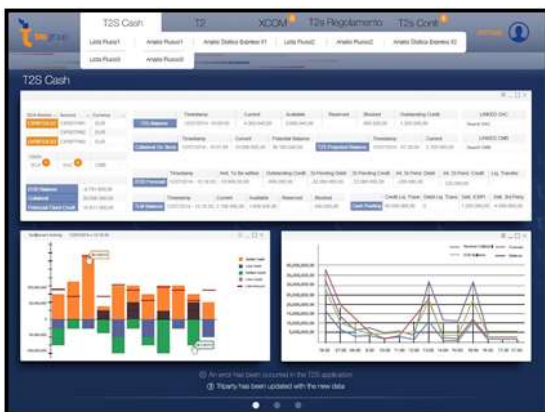


## AQUARIUS: The new platform for an integrated management of Securities, Cash and Collateral

The finance industry is focusing on the liquidity optimisation because of the financial regulators encouraging a strict control, including the intraday operations (e.g. Basel III), a wide use of Collaterals in order to reduce counterparty and system risks (e.g. EMIR, DODD Frank) and the bank assets liquidity.

**Aquarius** is the new TAS application for Securities, Cash and Collateral data management with a modular and integrated Liquidity and Settlement platform. Advanced graphical features and a high customisation capability permit to self-configure all the preferred application settings for the own business model. Aquarius can simultaneously manage multiple legal entities, in order to satisfy also Bank groups and Service Provider requirements.

- Added features to cross manage **liquidity** and **collateral** are enabled by the integrated management of cash and securities
- Decoupling the Customer Internal Application business logic concerning
  - settlement and clearing systems models
  - technical peculiarities (e.g. Data Formats and Communication Protocols)
- Naturally realise the integration between Treasury and Back Office departments
- Centralised Report Management (T2, T2S, CSD, iCSD, ...) and customer reporting



**Tas SpA**  
Sede Amministrativa  
Via del Lavoro 47  
40033 Casalecchio di Reno (BO)  
T [+39] 051 458011  
F [+39] 051 4580248  
www.tasgroup.it

**Tas SpA**  
Sede Legale  
Via Benedetto Croce 6  
00142 Roma  
T [+39] 06 7297141  
F [+39] 06 72971444

Capitale sociale € 21.919.574,97 i.v.  
N. R.E.A. RM 732344  
Partita IVA 03984951008  
C.F. e N. Reg. Imprese  
di Roma 05345750581

## FOCUS

### SECURITIES

- T2S features fulfilment for Direct and Indirect participant
- CSD, iCSD, Global Custodians systems integration
- Pre-settlement and Settlement
- Settlement Instruction and Settlement Restriction Life Cycle management
- Securities accounts balance and Sub-balance monitor
- Forecasts (intraday and next days)
- Matching and Reconciliation
- Settlement instruction aggregation and shaping

### COLLATERAL

- Triparty Services integration
- Bilateral Repo
- T2S Auto and Client collateralisation
- National Central Bank Pooling
- Collateral Frameworks
- Eligibility Criteria
- Forecast
- Mark To Market
- Assets allocation and selection

### CASH

- Real time monitoring and management on RTGS, T2S DCA, Ancillary and Correspondent Bank accounts
- Payments flow management to different settlement channels
- Forecasts capabilities
- Statistical analysis of payment flows
- Reserve monitoring
- Limits management
- Liquidity Transfer (manual and automated)

